

Lenovo

HD116

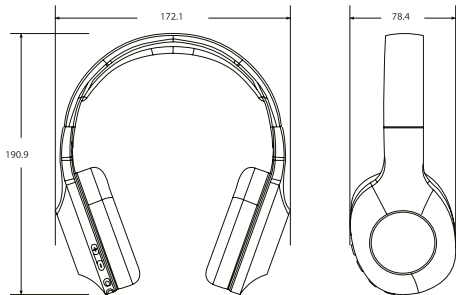
User guide

Manuale operativo

**WIRELESS OVER EAR HEADPHONE
CUFFIA SENZA FILI A PADIGLIONE**




PACKAGE CONTENTS






1. Unit product ;
2. Micro charging cable (L:80CM Φ 2.5MM) ;
3. AUX-Line-in cable (3.5mm plug on both ends L:80CM Φ 2.0MMM) ;
4. User guide.

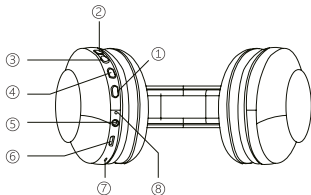
BUTTON FUNCTION

1. Multi-function, Power ON/OFF, Calling, Play/Pause, Redial.

Long press  3s to power ON/OFF.

Short press  to Play/Pause when playing music. Short press  to answer/end a call.

Quickly press  2 times to refuse a call/redial the last number your phone called out.



2.Short press "+" to increase volume;

Long press "+" to next song.

3.Short press "-" to decrease volume;

Long press "-" to previous song.

4.Short press "BASS" to bass mode;

Short press it again, exit BASS mode.

5. AUX IN function

6. Micro USB Charging port

7. MIC

8. Indicator Light

PRODUCT SPECIFICATIONS

Bluetooth Version	BT 5.0
Distance	Up to 10 meters
Sensitivity	100±3 dB
Rechargeable lithium battery	300 mAh
Frequency response range	20 - 20k HZ
Charging time	Approximately 1 hour
Playing time	Approximately 24 hours
Input DC	5.0±0.25V

HOW TO CHARGE

These headphones have an internal rechargeable battery. The battery must be fully charged prior to use.

Charging time is approximately 1 hour.

The red indicator will turn on when it charging, it will die out after full charged.

HOW TO CONNECT

Make sure the Bluetooth function is available on your cell phone.

Specific Pairing procedures will be different depending on different cell phone. For detailed information, please refer to your cell phone's User Guide.

After a successful pairing, devices will memorize each other. Therefore, no pairing will be needed next time, just press the multifunction button 3 seconds.

PAIRING TO BLUETOOTH DEVICE

1. Keep the distance between the cell phone and the headphone within 3 feet (for pairing only)
2. Press the multifunction button for 3 seconds to power on , you will hear "Power on" and blue light will come on.
3. The device will go into pairing mode when you hear "pairing" , meanwhile the blue and red light flash alternately.
4. Activate the Bluetooth function of the cell phone to search for the Bluetooth devices, select "HD116" in the device list displayed.

5. After a successful connection, you hear "sort connected" and the blue light of the headphones will flash once every few seconds.

LINE-IN USE

You have an option to use these headphones via line-in. Make sure your headphones are charged.

1. Turn ON the headphones by pressing the multifunction button 3 seconds.
2. Use the standard 3.5mm auxiliary cord to connect the headphones to your device.

IMPORTANT SAFETY INFORMATION

- Don't remove or replace the Battery, including sensitive electronic components, including a battery, and can be damaged or cause injury if dropped, burned, punctured, crushed, disassembled, or if exposed to excessive heat or liquid. Don't use damaged batteries and electronic components.

- Disposal and recycling information

Don't treat the product and battery as a household waste or into a fire. When you decide to dispose of the product and its battery, please follow the local environmental laws to handle the battery to avoid an explosion.

- Medical device interference

The product contains components and radios that emit electromagnetic fields and also contains magnets. These electromagnetic fields and magnets may interfere with pace-makers, defibrillators, or other medical devices. Maintain a safe distance of separation between your medical device and product. Consult your physician and medical device manufacturer for information

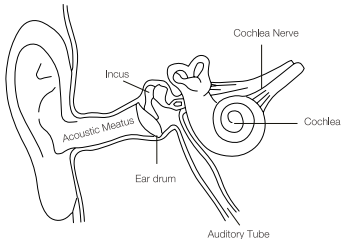
specific to your medical device. Stop using product if you suspect it is interfering with your pacemaker, defibrillator, or any other medical device.

- Listen Responsibly

To avoid hearing impairment, please make sure to turn down the volume of the music player before connecting the earphones. After putting the earphones into/onto the ears, turn up the volume gradually until to a comfortable listening level. Noise level is measured in decibels (dB). Exposure to 85dB or higher noise will lead to gradual hearing impairment. Please supervise your usage and the hearing impairment is a function of loudness against time.

The louder the sound is, the shorter you can be exposed. The softer the sound is, the longer you can listen.

- Ear physiology diagram



- Use Responsibly

Don't use headphones in unsafe situations, such as driving, crossing the street, or engaging in anything that requires concentration or in such an environment. Using earphones while driving is not only dangerous, but also breaking the law in many places because it reduces the chances that you will hear the sounds of your life outside your car, such as those of other cars Sirens and ambulance sirens. Don't wear headphones while driving. Instead, you can use the in-car FM transmitter to listen to content on mobile media devices.

NURSING AND WEAR CONSIDERATIONS

- Periodically clean, especially the parts in contact with the skin. Use a clean, moist cloth. Do not allow the product to come into contact with hot and acidic liquids.
- Wear loosely, to ensure that the air circulation.
- Remove the product from time to time, in order to clean, but also let the skin freely. Do not open the housing or demolition.
- Do not use if the display breaks.
- Do not place the product in the washing machine or drying machine. Do not expose your product to extremely high or low temperatures. Do not sweat in the sauna or steam room to use the product.
- Do not make the product for a long time by the direct sunlight.
- Do not place the product in a fire process. The battery may explode. Do not use abrasive cleaners to clean the product.
- If the product gets wet, do not charge. If you feel product in the heat, remove it.

Environmental, recycling, and disposal information

GENERAL RECYCLING STATEMENT

Lenovo encourages owners of information technology (IT) equipment to responsibly recycle their equipment when it is no longer needed. Lenovo offers a variety of programs and services to assist equipment owners in recycling their IT products. For information on recycling Lenovo products, go to:

<http://www.lenovo.com/recycling>



IMPORTANT WEEE INFORMATION

Electrical and electronic equipment marked with the symbol of a crossed-out wheeled bin may not be disposed as unsorted municipal waste. Waste of electrical and electronic equipment (WEEE) shall be treated separately using the collection framework available to customers for the return, recycling, and treatment of WEEE. Country-specific information is available at:

<http://www.lenovo.com/recycling>

RECYCLING INFORMATION FOR INDIA

Recycling and disposal information for India is available at: http://www.lenovo.com/social_responsibility/us/en/sustainability/ptb_india.html



BATTERY RECYCLING MARK

Battery recycling information for the European Union

Batteries or packaging for batteries are labeled in accordance with European Directive 2006/66/EC concerning batteries and accumulators and waste batteries and accumulators. The Directive determines the framework for the return and recycling of used batteries and accumulators as applicable throughout the European Union. This label is applied to various batteries to indicate that the battery is not to be thrown away, but rather reclaimed upon end of life per this Directive. In accordance with the European Directive 2006/66/EC, batteries and accumulators are labeled to indicate that they are to be collected separately and recycled at end of life.

The label on the battery may also include a chemical symbol for the metal concerned in the battery (Pb for lead, Hg for mercury, and Cd for cadmium), Users of batteries and accumulators must not dispose of batteries and accumulators as unsorted municipal waste, but use the collection framework available to customers for the return recycling, and treatment of batteries and accumulators. Customer participation is important to minimize any potential effects of batteries and accumulators on the environment and human health due to the potential presence of hazardous substances, for proper collection and treatment go to: <http://www.lenovo.com/recycling>

RESTRICTION OF HAZARDOUS SUBSTANCES DIRECTIVE (ROHS)

Turkish

The Lenovo product meets the requirements of the Republic of Turkey Directive on the Restriction of the Use of Certain Hazardous Substances in Waste Electrical and Electronic Equipment (WEEE).

Türkiye AEEE Yönetmeliğine Uygunluk Beyanı Bu Lenovo ürünü, T.C. Çevre ve Orman Bakanlığı'nın 'Atık Elektrikli ve Elektronik Eşya Bazı Zararlı Maddelerin Kullanımının Sınırlandırılmasına Dair Yönetmelik (AEEE)' direktiflerine uygundur. AEEE Yönetmeliğine Uygundur.

Ukraine

Цим підтверджуємо, що продукція Леноводповідно є вимогам нормативних актів України, які обмежують вміст небезпечних речовин

India

RoHS compliant as per E-Waste (Management & Handling) Rules, 2011

Vietnam

Lenovo products sold in Vietnam, on or after September 23, 2011, meet the requirements of the Vietnam Circular 30/2011/TT-BCT ("Vietnam RoHS").

European Union
Lenovo products sold in the European Union, on or after 3 January 2013 meet the requirements of Directive 2011/65/EU on the restriction of the use of certain hazardous substances in electrical and electronic equipment ("RoHS recast" or "RoHS 2").

For more information about Lenovo progress on RoHS, go to: http://www.lenovo.com/social_responsibility/us/en/RoHS_Communication.pdf

FCC STATEMENT

This equipment has been tested and found to comply with the limits for a Class B digital device, pursuant to part 15 of the FCC Rules. These limits are designed to provide reasonable protection against harmful interference in a residential installation. This equipment generates uses and can radiate radio frequency energy and, if not installed and used in accordance with the instructions, may cause harmful interference to radio communications. However, there is no guarantee that interference will not occur in a particular installation. If this equipment does cause harmful interference to radio or television reception, which can be determined by turning the equipment off and on, the user is encouraged to try to correct the interference by one or more of the following measures:

- Reorient or relocate the receiving antenna.
- Increase the separation between the equipment and receiver.
- Connect the equipment into an outlet on a circuit different from that to which the receiver is connected.
- Consult the dealer or an experienced radio/TV technician for help.

This device complies with part 15 of the FCC Rules. Operation is subject to the following two conditions:

(1) This device may not cause harmful interference, and (2) this device must accept any interference received, including interference that may cause undesired operation.

Changes or modifications not expressly approved by the party responsible for compliance could void the user's authority to operate the equipment.

Manufactured, distributed, or sold by Beijing Kangshuo Information Technology Co., Ltd official licensee for this product. LENOVO and the Stylized LENOVO Logo are trademarks or registered trademarks of Lenovo (Beijing) Ltd.

All other trademarks are the property of their respective owners.

Reduce | Reuse | Recycle



Printed in China